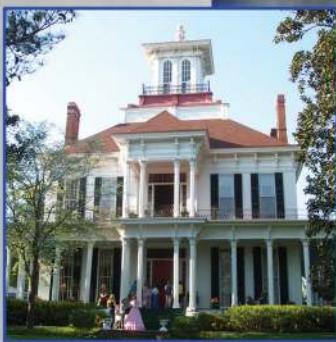
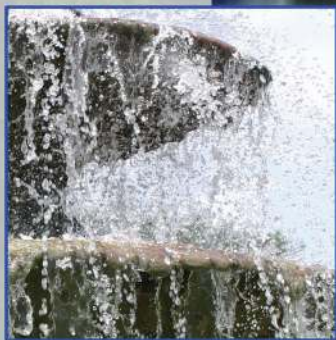


# *Eufaula* ALABAMA

*Your Vacation  
is calling . . .*



**1-800-524-7529**  
**[www.eufaulachamber.com](http://www.eufaulachamber.com)**

Even the most acclaimed traveler will agree there is no other town like Eufaula, Alabama. Here you will find something suited for every member of your family. Whether you enjoy fishing at dawn or skiing with friends, Eufaula is catching. Whether you like shopping for treasures from this century or the past as you stroll in an historic main street setting or you prefer to stroll through thousands of acres of preserved beauty filled with wildlife, Eufaula is charming. And if you dream of experiencing history brought to life through southern mansions, cemeteries and monuments, you will delight in legendary Eufaula. Most importantly, no matter which endeavor you choose, you are certain to be met with warm Southern hospitality. This makes our town a worthwhile stop within your travels, as well as a destination in and of itself. Whether you stay with us for a weekend, a season, or a lifetime, we cordially invite you to escape to Eufaula.

Warmest Regards,  
Eufaula Barbour  
Chamber of Commerce

**1-800-524-7529**

# Table of Contents

History of Eufaula . . . . .	1
Things To Do and See . . . . .	5
Eufaula Pilgrimage . . . . .	9
Annual Events . . . . .	10
Lake Eufaula . . . . .	11
"Big Bass Capital of the World"	
Eufaula National Wildlife Refuge . . . .	14
Parks . . . . .	15
Camping . . . . .	17
Hunting . . . . .	17
Lodges . . . . .	18
Recreation . . . . .	19
(tennis, golf, swimming, and more)	
Visitor Information and The Essentials . . . . .	20
(post office, local news, library, etc.)	
Places to Stay . . . . .	22
Shopping and Dining . . . . .	24
Nearby Attractions . . . . .	27

## *Southern Charm. . .*

is a trait that comes naturally. Eufaula's power to allure and delight holds not only tourists in captivated fascination, but her inhabitants as well. Couples strolling down the sidewalks with little ones skipping along or riding in a wagon behind them are a typical sight. Nature abounds, even in highway medians, filling the air with the sweet smell of hydrangeas, azaleas and zinnias.

## *History of Eufaula*



To foster the quintessential southern charm Eufaula displays today, the town traveled a very colorful history. The tale begins as the story of America does-with the Indians-and a very peculiar name. Few see "Eufaula" and say "you-fall-uh," as they should. One can imagine this was particularly true in 1823 when a group of Georgia men in search of fertile land for crops, descended upon a Creek town called "Eufaula." Living along a bluff overlooking the Chattahoochee, the "Eufaulas" had been inhabiting the area now known as St. Francis Point for nearly 100 years. Soon, however, they were sharing the land with the men from Georgia, who organized a settlement with the adopted name of "Eufaula."

Around this same time William Irwin, a veteran of the Creek War of 1813-14, was granted several thousand acres of land in Henry County just to the south of modern-day Eufaula. Through his political connections, Irwin established the first steamboat wharf along the river here, as well as the first post office, which set the foundation for the town's rise to prominence as a center of trade. In appreciation, the town was renamed "Irwinton" in 1833. It quickly developed into a population center in the new county of Barbour, which had just been created in 1832.

The town began to take the shape familiar to us today when in 1834 Captain Seth Lore laid out its principal

streets. While Broad Street ran east-west, the four main north-south avenues were named “Livingston,” “Orange,” “Randolph,” and “Eufaula; which spells out L-O-R-E. The rich agricultural lands of the region around the town lured an influx of American settlers into eastern Alabama. As the swelling population of land-hungry settlers crept farther and farther into Indian land, tensions with area Creeks escalated.

The bloody Second Creek War of 1836 was the result.



In the brief war, fought almost entirely in the Chattahoochee Valley, the Creeks were defeated in their effort to preserve title to their last remaining ancestral lands. There were fortifications built during the war in Barbour County, including Fort Browder near current-day Batesville and a smaller fort built on what is now North Randolph Street in Eufaula. One of the last battles of this war, the Battle of Hobby’s Bridge, was fought on the Barbour/Dale County border. Once the fighting ceased, defeated area Creeks were forced to move west in a migration that has become known as the “Creek Trail of Tears.”

In the midst of a thriving economy in 1843, Irwinton suffered from a constant misdirection of mail to Irwinton, Georgia. The postal confusion was unsuitable for such a



center of trade, so it was decided that the town would reclaim its former name of Eufaula. During this prosperous time, thousands of bales of cotton were shipped down the Chattahoochee from Eufaula to ports as far away as New York and Liverpool. When the steamers returned, they carried with them exquisite furniture and an array of fine goods for the growing markets in Eufaula. Many magnificent

homes were built in the city during this time on its broad, tree lined boulevards.



As the issue of slavery boiled over in the 1850s, a politically powerful group of local lawyers that has become known as the “Eufaula Regency” became among the first to agitate for secession. They consistently advocated an independent Southern nation throughout the decade through the pages of local papers and in important elections. Shortly after Alabama left the Union in

1861, John Gill Shorter, a prominent Regency member, was elected governor. Eventually six companies of soldiers from throughout Barbour County marched off to war to fight for the Confederacy, and served on battlefields from Bull Run to Appomattox.

In late April of 1865 a messenger on horseback galloped into town with the news that the war was finally coming to Eufaula; General Benjamin H. Grierson, backed by 4,000 Union soldiers, was marching towards the city from Clayton. The approaching troops could only have one intention—to ransack Eufaula. Unbeknownst to the citizens of the Bluff City, however, Grierson had just heard of the surrender of the Confederate armies and knew the war was over. Mayor Dr. C.J. Pope and other prominent citizens nevertheless swiftly organized a welcoming party to intercept the General’s march and met him on College Hill near Fendall Hall under the veil of a white flag of truce. The Union troops marched peacefully through town and across the bridge to Georgetown, Georgia. Local legend states that a well-known Eufaula musician defiantly played Dixie on the front porch of a house as the troops paraded by. Other citizens were more welcoming, as the mayor hosted Grierson and his staff for dinner in his home.



Though many local treasures escaped destruction during the war, they would not have been preserved for us today without the work of local preservationists such as the Eufaula Heritage Association. After the demolition of several older homes, the group formed to preserve the city's architectural gems. It purchased Shorter Mansion



at auction, thereafter using the mansion as headquarters for both the Association and the annual Eufaula Pilgrimage. A museum interpreting local history and honoring the service of the eight Alabama governors who hailed from Barbour County and the career of Admiral Thomas Moorer, a former Joint Chief of Staff, is located in the second story of the mansion. Today the Seth Lore/Irwinton Historic District, containing over 700 historic structures, is the largest historic district in East Alabama and the second largest in the state.

But enchanting history is only part of Eufaula's unmistakable charm. The town is beautifully situated along the shores of Lake Walter F. George, more commonly known as Lake Eufaula. The lake was formed in 1963 by the Corps of Engineers by the damming of the Chattahoochee at Fort Gaines, Georgia. It is widely recognized as a lure for fishermen and avid outdoorsmen, and draws visitors from throughout the nation for its abundant recreational opportunities.

We invite you to explore some of Eufaula's special past, enjoy its unique natural setting, and experience what makes this small town nestled on the bluff such an unforgettable place.



# Things to Do and See

One doesn't have to be in Eufaula long, before they begin hearing stories from days past. Founding fathers and war heroes, Southern belles and daring heroines, they all left their mark. Some people consider these stories tall tales, fact woven with imagination. Others hear their heels click beneath them on the hardwood as they tour the homes and take in the sights, slipping into nostalgia like you'd slip into a cool stream in mid-July. These visitors can travel back in time and spend a lazy afternoon on the veranda watching the river roll by. To insightful travelers, Eufaula is more than pretty houses with magical allure, to these, Eufaula is indeed legendary.

## EUFAULA CARNEGIE LIBRARY

For over 100 years, the library has served the community in the same historic structure. In addition to traditional library services, Carnegie maintains extensive genealogy information on the area and provides modern computer technology for patrons. 217 North Eufaula Avenue. Call 334.687.2337 Open Mon. - Sat.



## FAIRVIEW CEMETERY

A delicate iron fence that once surrounded the Eufaula's Union Female College encloses Fairview Cemetery. Hidden behind the entrance foliage is the old Jewish section, the graves of European settlers and Confederate soldiers, as well as burial grounds for slaves.

## FENDALL HALL

This antebellum Italianate home was built by Edward and Ann Young between 1856 and 1860. It remained in the Young family until it was sold to the state of Alabama in 1973. Today it is operated as a historic house museum by the Alabama Historical Commission. The home is decorated with family and period furnishings. 1880's murals have been restored to their original elegance in three rooms. Tours are available from the black and white Italian marble tiled entry to the cupola four stories and 76 steps above.



Open to the Public: Mon – Fri and 1st Sat 10 am - 4 pm



## HART HOUSE

Now the home of the Historic Chattahoochee Commission, the Hart House originally was home to a prominent merchant and farmer who built the Greek Revival structure around the year 1850. At the time, the home was considered to be on the western edge of town.



[www.hcc-al-ga.org](http://www.hcc-al-ga.org)

21 North Eufaula Avenue (Highway 431)

334.687.9755

Open Mon. - Fri.

## JAMES S. CLARK CENTER

Now the home of the Eufaula Barbour County Chamber of Commerce, this building was originally constructed around 1892 as a freight depot. It served Eufaula and the surrounding area until the late 1980s.



Open for tours:

Mon. - Fri. 8:30a.m. - 4:30p.m.

333 East Broad Street

334.687.6664

1.800.524.7529

[www.eufaulachamber.com](http://www.eufaulachamber.com)

## SHORTER MANSION

A prominent feature along historic North Eufaula Avenue, Shorter Mansion is perhaps Eufaula's most identifiable feature. Originally built in 1884, the mansion was once home to Governor John Gill Shorter. This pristine example of architecture was featured in the motion picture *Sweet Home Alabama*.



Open for tours:

Mon. - Sat. 10:00a.m. - 4:00p.m.

334.687.3793

1.888.EUFAULA

[www.eufaulapilgrimage.com](http://www.eufaulapilgrimage.com)

## CONFEDERATE MONUMENT

Presented by the United Daughters of the Confederacy in 1904, and standing at 35 feet tall, the confederate monument towers over the intersection of Broad Street and Eufaula Avenue.



## DOUGH BOY MONUMENT

This image of a WWI doughboy, with his arm outstretched, honors five of the ten men from Eufaula who perished in WWI. It was erected and dedicated in 1920.

## FIRE BELL

Once a signal for fire rescues in its original post in the E. B. Young Fire Company fire house, this 1883 bell required a rescue of its own when the bell tower of the firehouse was deemed “unsafe” and was removed.



## GOVERNORS' PARK

Governors' Park has a view befitting any governor. Nestled into the bluff over Lake Eufaula, the park honors six distinguished Barbour Countians who served the state of Alabama as governor: John Gill Shorter, William Dorsey Jelks, Braxton Bragg Comer, Chauncey Sparks, George Corley Wallace and Lurleen Burns Wallace.



## MACMONNIE'S FOUNTAIN

This three-tiered, wrought-iron fountain is crowned by a cherub, and fits in perfectly with the character of downtown. It was purchased from the city of Dayton, Ohio, in 1880.



## OLD CITY JAIL

Originally located behind the courthouse in downtown Eufaula, this structure was divided into two cells - one for men and one for “women and lunatics.” With foot-thick brick walls and a ceiling of three layers of boards, escape proved difficult.



## REVEREND MORTON BRYAN WHARTON STATUE

Appropriately located within the intersection of East Barbour and Randolph Avenue, is a marble statue memorializing Reverend Wharton, pastor of First Baptist in 1867.



## SHORTER CEMETERY

Alabama's Civil War Governor, John Gill Shorter, was laid to rest, along with the Governor's father, the famous Indian fighter General Reuben Clark Shorter, in Shorter Cemetery. Graves date back to 1840.

## WORLD WAR II MEMORIAL

The veterans of Eufaula's National Guard Unit, Battery D 104th Anti-aircraft Artillery Battalion, formed in 1940 by Lt. Col. Robert McKenzie, created this marble monument, which is inscribed with the names of all those who served in Battery D in World War II.



## SETH LORE AND IRWINTON HISTORIC DISTRICT

The Seth Lore and Irwinton Historic District remains the largest historic district in east Alabama, as well as the second largest in the state. Encompassing over 700 structures on the National Register of Historic Places, the district stretches throughout the oldest part of town. Stop by the Eufaula Barbour County Chamber of Commerce to obtain a Walking/Driving Tour Guide.



## REEVES PEANUT

The Eufaula Grocery Company originally built this warehouse property. It is a large brick building made up of three sections. Each section has a gabled roof featuring large ventilators in the middle of each façade with arched doorways and windows. Reaves is still a fully functional peanut warehouse.



## YOHOLLO MICCO – WALKING TRAIL

Newly converted, 3.2 miles of abandoned rail bed is now a



beautiful walking trail with a gorgeous water view and many other hidden jewels along the way. The trail begins in the heart of historic downtown in front of the Eufaula Barbour Chamber of Commerce.

Winding along the beautiful scenery you will find squirrel & eagle crossings along with a completely restored railroad trestle that literally crosses over Lake Eufaula. The end of the trail eventually ends at Old Creek Town, a beautiful waterfront recreational area that house the Playground of Dreams.

Hours Open: Dawn to Dusk

333 East Broad Street • Eufaula, AL 36027

## *Annual Events*

### THE EUFAULA PILGRIMAGE

Every April spring blooms in Eufaula just in time for the annual Eufaula Pilgrimage. Set against a backdrop of colorful azaleas and dogwoods, Alabama's Oldest Tour of Homes draws you back in time to experience the settlement of Eufaula, confrontation with Yankee troops, and life when "cotton was king." Marvel at pristine examples of Greek Revival, Victorian, and Italianate architecture as you meander through picturesque streets speckled with homegrown entertainment and award winning artists. While the homes open for tour vary each year, the warm hospitality does not. Southern belles draped in colorful hoop skirts guide you through the homes, sharing bits of history and legend along the way. At the



close of the day you will leave with your own piece of charm to travel home with you. For more information call The Eufaula Heritage Association at 1.888.EUFAULA or visit [www.eufaulapilgrimage.com](http://www.eufaulapilgrimage.com).

## INDIAN SUMMER

Held the second weekend of October, the Indian Summer Arts and Crafts Festival has been a part of Eufaula's historic district for over twenty-five years. The festival offers the best of fine art and handmade crafts, along with a midway of food, local entertainment and a children's art competition.



## CHRISTMAS PARADE



The Downtown Eufaula Christmas Parade lights up the night every December. For over 48 years, locals have been thrilled by marching bands, floats, performers and, of course, Santa Claus. Santa remains after the parade to visit with children and food is available for the hungry parade spectators.

10

## CHRISTMAS TOUR OF HOMES

This tour held the first Saturday in December to coincide with downtown's Mistletoe Market. This is an enchanting tour of the South's finest homes draped in holiday cheer.



# On the Lake



On quiet mornings, as the fog rolls off the lake, the hazy profiles of determined anglers appear from out of the darkness. They sit in patient wait for that trophy largemouth bass. As the southern sun climbs over the afternoon sky, wave runners and water-skiers emerge from the shores, kicking up spray up and down the river. Boats carefully maneuver the channel markers, some choosing to float down the river to the Gulf. Then, as the water enthusiasts retreat to their dinners, fishermen once again speckle the creeks and inlets, in search of crappie, bream and catfish. And so the life cycle of the lake continues, every day helping busy people learn to relax and enjoy the best recreation the South has to offer.

11

## **LAKE EUFAULA** (*Lake Walter F. George*)

“Big Bass Capital of the World”

Acreage: 45,000

Shoreline: 640 miles

Average Depth: 15 - 18 feet

## **LAKE GUIDES**

Lake Eufaula Guide - Tracy Beall, USCG Licensed  
334.703.2570

Hawk's Guide Service - Sam Williams, USCG Licensed  
334.687.6266 or 334.355.5057

Lake Eufaula Guide Service - 334.687.9595

Billy Darby Fishing Guide Service - USCG Licensed  
229.768.2369

## **LICENSE PURCHASE**

Wal-Mart - 334.687.2218

Lakepoint State Park and Resort  
Marina Store 334-687-6026

Alabama Department of  
Conservation and Natural Resources  
On-line at [www.dcnr.state.al.us.com](http://www.dcnr.state.al.us.com)  
or 1.888.848.6887



# SEASONAL PATTERNS

<u>WHAT'S BITING</u>	<u>WHEN</u>	<u>WHERE</u>
Largemouth Bass	March is big bass time	Creeks, sloughs and bedding flats April break out the top-water
	May-June	Creek ledges, points and ditches
	July-September	Shallow ledges on creeks, creek/river junction areas
	October	Main River ledges, roadbeds, humps River flats, creek ledges, ditches
Crappie	Mid-February-May June-September	Creek ledges and steep banks Bridges, river ledges (better at night)
	October-November	Shallow river ledges, creek/river junction areas, bridges
Bream	April-June	Shallow flats near grass in creeks
Hybrid Bass	March	Upper river and up major creeks
	April-May	Creek points and ledges
	June-February	Main river channel and feeding flats
Spotted Bass	March-Mid May	Creek ledges and points near bedding flats
	June-February	Main river ledges, points, humps
Catfish	Year-around	River and creek points



## MARINAS

Full service, guides, and rentals

Chewalla Creek Marina - 334.687.5751

Lakepoint Marina - 334.687.6026

## BOAT LAUNCHES

Highland Park .....	Mile marker 76.0
Hardridge Creek Park .....	Mile marker 78.0
Thomas Mill Creek Park .....	Mile marker 80.0
White Oak Creek Park Campground ..	Mile marker 86.4
Cheneyhatchee Creek Park .....	Mile marker 90.0
Barbour Creek Landing.....	Mile marker 91.0
Chewalla Creek Marina .....	Mile marker 95.0
Old Creek Town Park.....	Mile marker 97.5
Lakepoint Resort State Park.....	Mile marker 101.7

## ON-WATER GAS PUMPS

Bagby State Park.....	Mile marker 78
Chewalla Marina.....	Mile marker 95
Lakepoint Resort.....	Mile marker 102
Florence State Park .....	Mile marker 113
Uchee Creek Recreational Area .....	Mile marker 138

## U.S. ARMY CORPS OF ENGINEERS

For water levels, a generation schedule, information on the fish attractor program, and other corps maintained facilities, call: 229.768.2576 or visit: [www.sam.usace.army.mil](http://www.sam.usace.army.mil)

## LAKE WALTER F. GEORGE LOCK AND DAM

In 1963 the Army Corps of Engineers created Lake Eufaula behind the lock and dam at Ft. Gaines, Georgia. At 88 feet high, the Walter F. George Lock and Dam is the second highest lock lift east of the Mississippi River.

Open Daily: 8a.m. - 4p.m. EST



## WALTER F. GEORGE RESOURCE MANAGER'S OFFICE

This interpretive center orients visitors around Ft. Gaines with the help of displays and brochures. Located 2 miles north of Fort Gaines on Highway 39. Open: Mon.-Fri. 8a.m.-4p.m. EST, Sat.-Sun. 9:30a.m.-6p.m. EST 229.768.3516



## BARBOUR COUNTY PUBLIC LAKE

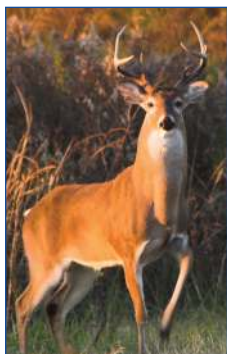
For quality fishing just 6 miles north of the town of Clayton, on County Road 49, this public lake spans 75 acres across Barbour County. Easy and affordable access is provided through boat rentals, a boat ramp, and a fishing pier. The lake closes in December and January for the winter season. 334.775.7123

## EUFAULA NATIONAL WILDLIFE REFUGE

The Eufaula Wildlife Refuge was established in 1964, thereby creating a protected habitat for endangered and threatened species, as well as for wintering waterfowl and other migratory species. Spanning 11,184 acres on both sides of the Chattahoochee River, the diverse refuge includes wetlands, croplands, woodlands, and grasslands, which are home to such animals as the bald eagle, American alligator, bobcat, and the peregrine falcon, along with the more common quail, armadillo, and beaver.



A seven-mile auto tour route, two observation platforms, a one-third mile walking trail, youth hunts, fishing, photography, and other opportunities are available daily. For educational programs, hunting and fishing regulations, and all other regulations on the refuge, contact the Visitor Station.



Refuge Manager  
367 Highway 165  
Eufaula, Alabama 36027  
334.687-4065  
FAX: 334.687-5906  
E-mail: [eufaula@fws.gov](mailto:eufaula@fws.gov)  
Refuge open daily, daylight hours  
Office/Visitor Station open  
Mon.-Fri. 8:00a.m.-4:00p.m. CST

## LAKEPOINT RESORT STATE PARK

This picturesque, 1,220-acre state park is conveniently located just 7 miles north of Eufaula on Highway 431, adjacent to the National Wildlife Refuge. With a wide array of activities, there is something for everyone. Angle for largemouth bass on Lake Eufaula or relax around the campfire. Enjoy an old fashioned picnic while the kids explore the playgrounds. Take advantage of a full service marina with an afternoon boat ride. While on the green you can drive a ball around an 18-hole golf course, or you may choose to battle through a hot tennis match, followed by a dip in the swimming pool. Lakepoint is more than a fisherman's paradise!



### Facilities Include:

- Resort Motel - overlooking the lake
- Conference Center - Seat up to 800 people in Meeting/Banquet Rooms
- Cabins/Cottages - 40 units: one, two, three or four bedroom available
- Campgrounds - water, electric hook-ups, sewage, bath houses
- Marina - boat rental, overnight docking, permanent storage, fuel dock and boat launching
- Hiking Trails
- Picnic Area - grills, tables, pavilions and playground
- Tennis Courts - lighted and all-weather
- Swimming Pool - for guests only
- Restaurant and Lounge

104 Lakepoint Drive  
P.O. Box 267  
Eufaula, Alabama 36027  
334.687.8011  
1.800.544.LAKE  
www.alapark.com



## **OLD CREEK TOWN PARK**

This 1,205 acre public park located directly on Lake Eufaula includes a baseball-softball complex, boat launch, sandy beach and bath house, nature trail, scenic lake drive, picnic area, the community built “Playground of Dreams,” and a new 40’ fishing pier that is handicap accessible.

End of Lake Drive

Admission Charged

334.687.1213

[www.eufaulaalabama.com/parksrec.html](http://www.eufaulaalabama.com/parksrec.html)

## **U.S. CORPS OF ENGINEER PARKS**

There are 13 Corps of Engineers maintained day use parks and 4 campgrounds scattered along the banks of Lake Eufaula giving visitors opportunities to swim, camp, fish, boat, picnic or just relax. Day use parks include: Highland Park, Hardridge Creek Day Use Park, White Oak Creek Day Use Park, Hatchechubbee Creek Park located on the Alabama side of the lake. East Bank Park, Pataula Creek Park, Cool Branch Park and River Bluff Park are located on the Georgia side of the lake. Overnight campgrounds include Bluff Creek, White Oak, Cotton Hill and Hardridge Creek.

For more information on park locations, area history or picnic shelter reservations call 229.768.2516 or stop by the Visitor Center at the Resource Site Office, located in Fort Gaines, Georgia. The office is open 5 days a week Monday through Friday from 8:00 a.m. till 4:30 p.m. Eastern Time.

## **BLUE SPRINGS STATE PARK**

The centerpiece of this unique, 103 acre park is a swimming pool fed with crystal clear water from an underground spring. At all times of the year the water remains at a cool 58 degrees, which is particularly comforting in a hot Alabama summer. Located in the western portion of Barbour County, the park also offers picnic tables, tennis courts, campgrounds, a comfort station, playground and a softball field.

Highway 10

Admission Charged

Call 334.397.4875

[www.dcnr.state.al.us](http://www.dcnr.state.al.us)



## CAMPING

Blue Springs  
Alabama State Park  
Highway 10  
334.397.4875

Lake Eufaula Campground  
Chewalla Creek Drive  
334.687.4425

Lakepoint State Park Resort  
Highway 431 North  
334.687.6026

White Oak Creek Campground  
Highway 95  
334.687.3101

## *Hunting*

### HUNTING SEASONS

You may obtain an up to date listing of all Alabama hunting seasons, limits and other information, or purchase a license from the Alabama Division of Wildlife and Freshwater Fisheries at [www.dcnr.state.al.us](http://www.dcnr.state.al.us).

### ALABAMA GAMEWATCH

1.800.272.GAME

### BARBOUR COUNTY WILDLIFE MANAGEMENT AREA

Located near Clayton off Barbour County Road 49, this area offers outstanding deer, turkey, and quail hunting opportunities, a picnic area, and a concession building. A map of the area and hunting regulations are distributed every fall. Free admission. Pay according to activity. No charge for use of the picnic area. Ranked #6 in the U.S. for public hunting by Field and Stream Magazine!



## ALABAMA DEPARTMENT OF CONSERVATION & NATURAL RESOURCES:

Fisheries	334.242.3471
Wildlife	334.242.3469
Enforcement	334.242.3467
License Unit	334.242.3829
Hunter Ed	334.242.3620

## EUFULA NATIONAL WILDLIFE REFUGE

Hunting is permitted for dove, deer, waterfowl, squirrel and rabbit. State and federal laws apply.

Refuge Manager  
367 Highway 165  
Eufaula, Alabama 36027  
334.687.4065  
FAX: 334.687.5906

## *Lodges*

### Lee Sells Outfitter & Guide, Inc.

With over 20 years experience in hunting game around the world, Lee Sells takes pride in giving his guests the best hunting experience possible here in his home town. Whether you prefer wild hogs, turkeys or deer, Sells will put you on the biggest and the best. Enjoy your stay in the lodge that sleeps up to 16 and cook with your friends in the fully furnished kitchen, or allow the staff to cater your dinners while you sit back and talk about your day! The lodge is also available to those who enjoy the lake. Complete boat hookups, fish cleaning station, stove, and washer and dryers make the week's stay more comfortable. To plan your adventure call 334.687.7451 or visit [www.leesellsoutfitters.com](http://www.leesellsoutfitters.com)

### Old Spring Hill Plantation

Deep South hunting and fishing for bobwhite quail, whitetail deer, wild turkey and largemouth bass, the way it used to be. The plantation provides year-round commercial hunting and fishing trips, meals and lodging. Corporate meetings are welcome. 2383 Spring Hill Road - 334.688.5050

## *Other Recreation*

### Lakepoint Resort State Park

Public

Highway 431 North

334.687.8011



### SWIMMING

Blue Springs State Park

Public Beach

Admission Charge

Highway 10

Clio, AL

334.397.4875

### Eufaula Community Center

Public Pool

Admission Charge

14 Community Drive

334.687.1213

### Old Creek Town Park

Public Beach

Admission Charge

End of Lake Drive

334.687.1213

### GOLF

#### Eufaula Country Club

Private

2650 Country Club Road

Eufaula, AL 36027

1.334.687.2008



### Lakepoint Resort State Park

Public

18 Holes, Par 72

104 Lakepoint Drive

334.687.6676

### Eufaula Community Center

Completed in 1998 to serve as the home of the Eufaula Parks and Recreation Department, the Eufaula Community Center provides the community with a variety of recreational and business services. With amenities such as a 25-yard, 8 lane swimming pool, sauna, walking/running track,

racquetball courts, a fitness room, meeting rooms and child care playroom, there is something for everyone.

14 Community Drive (off of Lake Drive)

Daily passes available. Call 334.687.1246

## *General Information*

Time Zone - Eufaula is within the Central Time Zone

Climate - Eufaula's mild climate allows for year-long enjoyment of outdoor activities, hobbies and festivals.

Average temperatures by season:

Spring 63.6

Summer 79.1

Fall 65.0

Winter 50.0

Average Annual  
Precipitation 68 inches



20



## *Local Information*

### CHAMBER OF COMMERCE

333 East Broad Street

334.687.6664

1.800.524.7529

[www.eufaulachamber.com](http://www.eufaulachamber.com)

### STATE REST AREA

Located 7 miles

South of Eufaula on Highway 431

### U.S. POST OFFICE

540 East Broad Street

334.687.3550

[www.usps.com](http://www.usps.com)

**THE EUFAULA TRIBUNE**

514 East Barbour Street  
Post Office Box 628  
Eufaula, Alabama 36027  
334.687.3506  
www.eufaulatribune.com



**THE CLAYTON RECORD**

Post Office Box 69  
Clayton, Alabama 36016  
334.775.3254

*Help*

**POLICE STATION**

545 East Barbour Street  
334.687.1200



**MEDICAL CENTER  
BARBOUR**

West Washington Street  
334.688.7000  
24 Hour Emergency Room

21

*Getting Around*

**EUFAULA JET CENTER**

1730 North Eufaula Avenue  
334.687.3132

**CAR RENTALS:**

Dollar Motor Co.  
102 South Eufaula Avenue  
334.687.9394

Enterprise Rent-A-Car  
for reservations: 800.231.2222  
334.687.7009 800.736.8222

**PUBLIC TRANSPORTATION**

Eufaula Transit Authority  
334.687.1242



# *Places to Stay*

*"Stay for a weekend, a season, or a lifetime..."*



## **CANDLELIGHT INN**

333 West Barbour Street  
Eufaula, AL 36027  
334.687.7702



## **DAYS INN**

Continental Breakfast, Swimming Pool,  
Jacuzzis Available, Pet Policy  
1521 S. Eufaula Avenue/Hwy 431 S.  
Eufaula, AL 36027  
334.687.1000 or 1.800.329.7466



## **ECONOLODGE**

Continental Breakfast, Power Outlets  
for Boats  
1243 North Eufaula Avenue/Hwy. 431 N.  
334.687.0166



## **JAMESON INN**

Continental Breakfast, Fitness Room,  
Swimming Pool, Pet Policy  
136 Towne Center Blvd/Hwy 431 S.  
334.687.7747 or 1.800.526.3766



## **LAKEPOINT RESORT STATE PARK**

Restaurant, Bar, Tennis, Swimming Pool,  
Marina, Campgrounds, Conference and  
Convention Center, Golf  
104 Lakepoint Drive/Hwy.431 N.

334.687.8011 or 1.800.544.5253



## **QUALITY INN AND SUITES**

Free Full Breakfast, Swimming Pool,  
Fitness Center, Wireless, Boat Hookups  
and Microwave & Refrigerators  
631 Barbour Street/82 East  
and Riverside Drive

1-800.4CHOICE or 334.687.4414

## CLASSIC INN

1350 S. Eufaula Avenue/Hwy 431 S.  
Eufaula, AL 36027  
334.687.3502

## COMFORT SUITES

Indoor Pool, Sauna, Fitness Center, Spa, Near  
Restaurants, Pet Policy, Board Room, Deluxe  
Continental Breakfast  
12 Paul Lee Parkway/Hwy 431 S.  
Eufaula, AL 36027  
334.616.0114 or 1.800.4CHOICE

## LAKE EUFAULA MOTOR LODGE

620 E. Barbour St/Hwy. 82 East  
334.687.4811

## LAKESIDE MOTOR LODGE

1010 North Eufaula Avenue/Hwy. 431 N.  
334.687.2477

## 23 SUPER 8

1375 S. Eufaula Avenue/Hwy 431 S.  
Eufaula, Al 36027  
334.687.3900 or 1.800.528.1234



# *The Shops of Historic Downtown* *fine gifts, apparel and antiques*

## **ART SERVICES**

137 South Eufaula Avenue  
334.687.9981

## **BAKER FURNITURE**

136 South Randolph Avenue  
334.687.3403

## **CUSTOM MONOGRAMS**

140 South Randolph Avenue  
334.687.3744

## **EUFAULA DRUGS**

146 East Broad Street  
334.687.3591

## **EUFAULA HARDWARE**

118 East Broad Street  
334.687.2071

## **FERRELL'S FLOWERS**

122 South Randolph Avenue  
334.687.4597

## **GIFTS & MORE**

114 North Eufaula Ave  
334.687.4448

## **GOODWILL**

117 East Broad Street  
334.687.7317

## **JOHNSTON JEWELRY**

141 East Broad Street  
334.687.8253

## **JUANITA'S FRAME SHOP**

114 South Eufaula Avenue  
334.616.7231

## **LADYBUGS AND LACE**

119 Forsyth Street  
334.687.0093

## **LASTING IMPRESSIONS**

104 South Eufaula Avenue  
334.687.6871

## **THE LEMON DROP**

106 South Eufaula Avenue  
334.687.7625

## **PRICE DRUGS**

206 East Broad Street  
334.687.6503

## **SATTERWHITE'S**

215 East Broad Street  
334.687.2717

## **SCARBOROUGH DRUGS**

139 West Broad Street  
334.687.2061

## **SCHAUB'S FLOWERS**

140 East Broad Street  
334.687.4363

## **SOUTHERN CHARM**

128 East Broad Street  
334.687.6770

## **SUPERIOR PECANS**

Corner of Britt  
and Orange Streets  
334.687.2031

## **WHITLOCK JEWELRY**

124 East Broad Street  
334.687.4806

*Dining* 24

## **BARBECUE**

### **PHIL'S BBQ**

534 South Randolph Ave.  
334.687.3337

### **MICHELLE'S**

Hwy 82 Georgetown  
229.334.5912

### **RIVER CITY BARBEQUE**

1366 North Eufaula Avenue  
Eufaula, AL 36027  
334.687.7594

## **CAJUN**

### **THE CAJUN CORNER**

Bluff City Inn  
114 N. Eufaula Avenue  
Eufaula, AL 36027  
334.616.0816

## **CHINESE**

### **NUMBER 1 CHINESE**

1451 South Eufaula Ave.  
334.687.8888

## DESSERTS

### **COMFORTS OF HOME – CAKES, PIES, ETC...**

133 East Broad Street  
Eufaula, Al 36027

### **SONIC DRIVE-IN**

1345 South Eufaula Ave.  
334.687.4833

### **THE DONUT KING**

350 South Eufaula Ave.  
334.687.4580

## DELI'S/CAFES

### **BLUE MOON COFFEE SHOP**

347 South Eufaula Avenue  
334.687.5001

### **BREAD BASKET**

330 East Broad St.  
334.687.5567

### **THE KEEPING ROOM**

133 East Broad Street  
334.616.0008

### **OASIS MART**

1858 South Eufaula Ave  
334.687.4218

### **SUBWAY**

1352 South Eufaula Ave.  
334.687.7700  
Subway is also located in Wal-  
Mart on South Eufaula Ave.

### **TISA'S CAKES**

716 South Randolph Ave.  
334.616.7771

## FAMILY STYLE

### **LAKESIDE RESTAURANT**

1720 North Eufaula Ave.  
334.687.3132

### **BARB'S COUNTRY KITCHEN**

114 North Eufaula Ave.  
334.616.0035

### **CREEK RESTAURANT**

3301 South Eufaula Ave.  
334.687.0083

### **BIG H CHICKEN**

1039 South Eufaula Ave.  
334.687.5100

## **LAKEPOINT RESORT**

Highway 431 North  
334.687.8011

### **MICHELLE'S**

Highway 82 Georgetown  
229.334.5912

### **RIVER CITY GRILL**

209 East Broad Street  
334.616.6550

### **WAFFLE HOUSE**

1449 South Eufaula Ave.  
334.687.0463

### **WILLY T'S CHICKEN**

126 State Docks Rd.  
334.616.0075

## FAST FOOD

### **ARBY'S**

815 South Eufaula Ave.  
334.687.7759

### **BURGER KING**

809 South Eufaula Ave.  
334.687.8477

### **CAPTAIN D'S**

1014 South Eufaula Ave.  
334.687.6312

### **CHURCH'S CHICKEN**

325 South Eufaula Avenue  
Eufaula, Al 36027  
334-687-5172

### **HARDEE'S**

3194 South Eufaula Avenue  
Eufaula, AL 36027  
1.332.688.2135

### **KENTUCKY FRIED CHICKEN**

801 South Eufaula Ave.  
334.687.9793

### **LITTLE CAESARS**

347 South Eufaula Avenue  
334.687.4100

### **MCDONALD'S**

1250 South Eufaula Ave.  
334.687.6686

### **SONIC DRIVE-IN**

1345 South Eufaula Ave.  
334.687.4833

**TACO BELL**  
1342 South Eufaula Ave.  
334.687.6151

**WENDY'S**  
1010 South Eufaula Ave.  
334.687.2140

## MEXICAN

**OLD MEXICO**  
South Eufaula Ave.  
334.687.7770

## PIZZA

**BIG DADDY'S PIZZA**  
812 South Eufaula Ave.  
334.687.8007

**THE FACTORY  
ICE CREAM &  
PIZZA PARLOR**  
112 S. Randolph Avenue  
Eufaula, Al 36027  
334-232-4506

**LITTLE CAESARS**  
347 South Eufaula Avenue  
334.687.4100

**PIZZA HUT**  
1110 South Eufaula Ave.  
334.687.7027

## SEAFOOD

**ANCHOR INN**  
Highway 95 South  
334.687.0006

**LAKEPOINT RESORT**  
Highway 431 North  
334.687.8011

**LAKESIDE RESTAURANT**  
1720 N. Eufaula Ave.  
334.688.0308

**THE CAJUN CORNER**  
Bluff City Inn  
114 N. Eufaula Avenue  
Eufaula, AL 36027  
334.616.0816

**THE CREEK  
RESTAURANT**  
3301 South Eufaula Ave.  
334.687.0083

**RIVER CITY GRILL**  
209 East Broad Street  
334.616.6550

## NIGHT LIFE & SPORTS BARS

**ANCHOR INN LOUNGE**  
Highway 95 South  
334.687.0006

**THE CREEK LOUNGE**  
3301 South Eufaula Ave.  
334.687.0083

**LEGENDS SPORTS CAFÉ**  
207 E. Broad Street  
Eufaula, Al 36027  
334-687-9184

**PIER'S END** (Lakepoint)  
Highway 431 North  
334.687.8011

**RIVER CITY GRILL**  
209 East Broad Street  
334.616.6550

**VFW POST #5850**  
Highway 431 North  
334.687.8522

# Day Trips

Just around the bend you will find a variety of attractions to fill a free morning or afternoon.



## Alabama

### WEHLE NATURE CENTER

Designed to foster education on conservation in Alabama, the center, operated by the State Lands Division, provides

a habitat for migratory waterfowl and other birds, endangered species and nature lovers alike. Covering 25 acres, the center is located on the Barbour/Bullock County line.



1.800.LAND.ALA

Open: Sat. 10a.m.-4p.m. & by appointment

### DOTHAN, ALABAMA

50 miles South on Highway 431

Home of the National Peanut Festival, Dothan features the Westgate Tennis Center and Softball Complex, Water World aquatic park, the Wiregrass Museum of Art, Landmark Park State Agriculture Museum, Dothan Area Botanical Gardens and Highland Oaks Golf Course, (part of the Robert Trent Jones Trail).

Visitor Information Center

1.888.449.0212



## WESTVILLE - "WHERE IT'S ALWAYS 1850"

Lumpkin, GA - 28 miles

This living museum transports its visitors back in time to an authentic Georgia town from the 1850's. Meander through thirty restored buildings in the company of craftsmen who just may let you try your hand at making candles or soap. Closed Mondays. 1.888.733.1850



## PROVIDENCE CANYON STATE CONSERVATION PARK

Lumpkin, GA - 28 miles

The breathtaking colors of Georgia's "Little Grand Canyon" span 1,109 acres and feature hiking and backpacking trails, pioneer campgrounds, and an Interpretive Center that explains the unique rock formations. 1.800.864.7275 or 912.838.6202



## KOLOMOKI MOUNDS STATE HISTORIC PARK

Spanning 1,294 acres, this archaeological marvel surrounds seven Indian mounds constructed during the 12th and 13th centuries by Swift Creek and Weeden Island Indians. The park also offers camping, swimming, fishing and boating, along with miniature golf, picnic facilities, a playground and nature trails.

Open: 7 days/week - 7a.m. - 10p.m. EST  
229.723.5296



## COLUMBUS, GEORGIA

60 miles north on Highway 431



This Georgia city offers much to the day tripper including the Columbus Botanical Gardens, Black Heritage Tour, Trolley Tours, the Columbus Museum, the National Infantry Museum, the Port Columbus Civil War Naval Center, the Springer Opera House, Columbus Riverwalk and Dragonfly River Tours.

Eufaula Barbour County Chamber of Commerce  
333 East Broad Street  
Eufaula, Alabama 36027

*Your Vacation  
is calling.....*



1-800-524-7529

[www.eufaulachamber.com](http://www.eufaulachamber.com)